

HLT33115

CRICOS Code 093438M

## Certificate III in Health Services Assistance

9 MONTHS

CLASSROOM BASED

Welcome

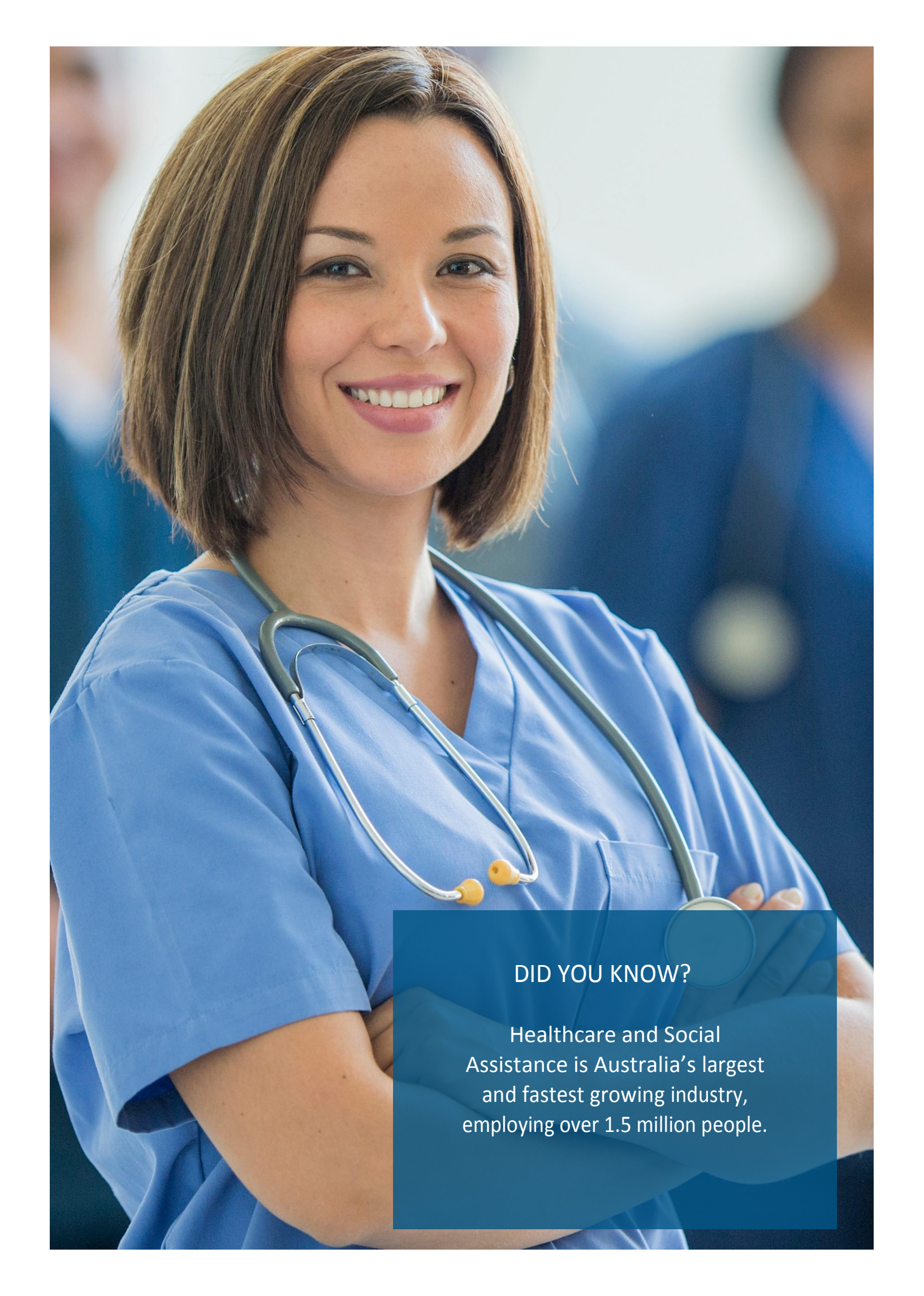
Discover the learning advantage at  
**Skills Training Australia**

**With an ever-increasing global demand for Aged Care and Hospital professionals, the Certificate III in Health Services Assistance (HLT33115) is the perfect platform from which to train for your exciting health services career.**

Specialist Nursing practitioners at Skills Training Australia work closely with our student associates - preparing them for a rewarding career in the health services industry, in a patient-centered environment.

You will enjoy a learning experience that carefully blends both theoretical knowledge and a practical skill set. All Skills Training Australia trainers/facilitators are current health sector professionals – and are genuinely committed to a student-centric approach. This drives everything we do. Within small class-size settings, we understand the importance of a relevant learning delivery.

**HLT33115 Certificate III in Health Services Assistance program – managed by today's experts, creating tomorrow's professionals**



**DID YOU KNOW?**

Healthcare and Social Assistance is Australia's largest and fastest growing industry, employing over 1.5 million people.

# Course Overview

The Skills Training Australia Certificate III in Health Services Assistance (HLT33115) is a full-time study program, delivered via a classroom-based face to face study mode. The course includes a total of 15 individual units and 120 hours of mandatory Professional Experience Placement.

This key qualification will equip you with the essential skills needed for assisting in health care. You will develop an appreciation for evidence-based patient care practice, as well as the practical skills needed to assist nurses and other health care professionals in a hospital setting.

This course is fully accredited under the Australian Qualification Framework (AQF). Skills Training Australia is regulated by Australian Skills Quality Authority (ASQA).

## Course Duration Options

- ◆ 9 months/2 days per week (Domestic)
- ◆ 9 months/3 days per week (International)

## Flexible Intake Options

Select a study commencement period that suits you (4 intakes per year)

# Course Delivery



The Certificate III in Health Services Assistance (HLT33115) program is delivered within a modern classroom setting – via an interactive, face to face learning method.

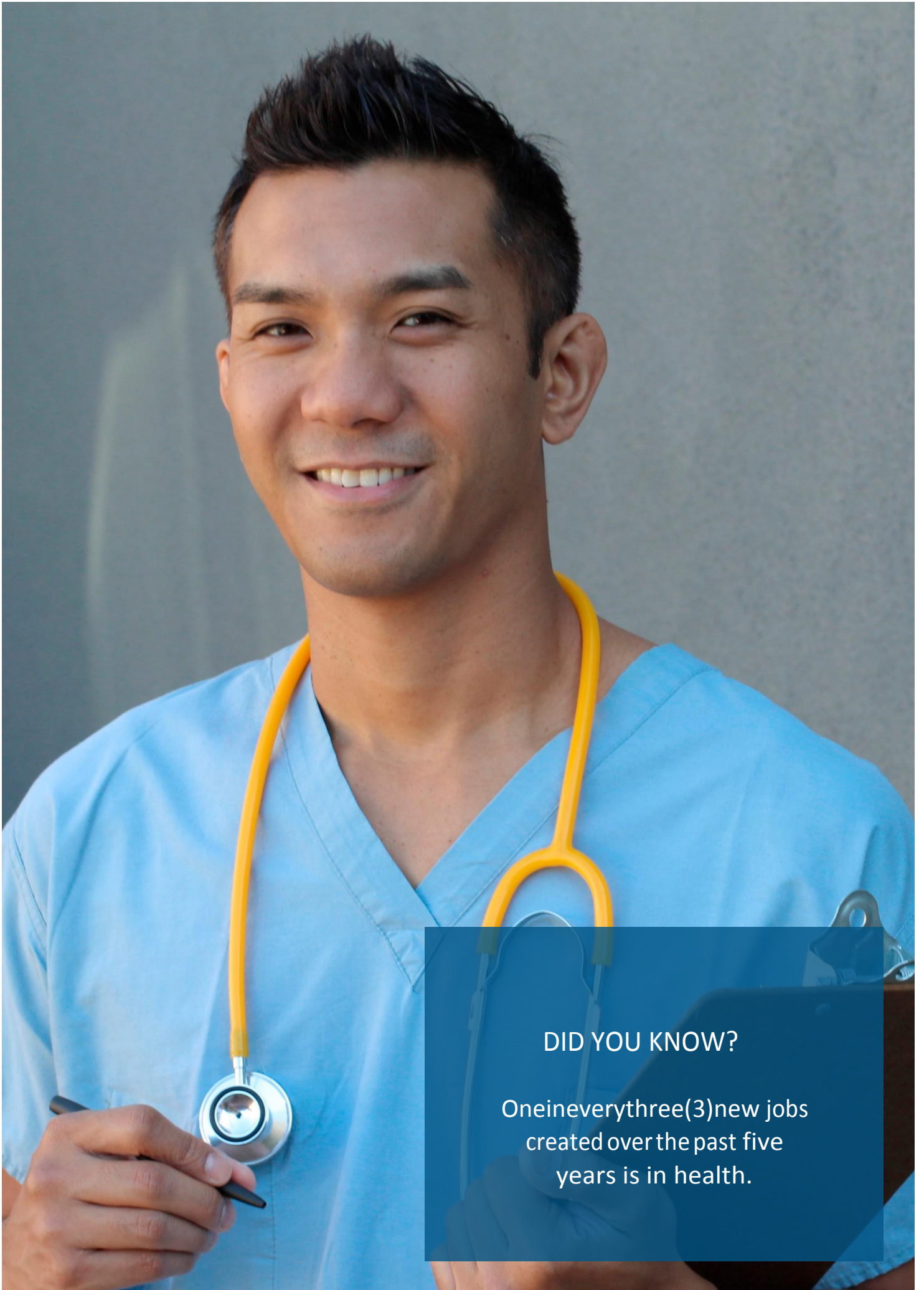
You will enjoy a learning experience that carefully blends both theoretical knowledge and a practical skill set. All Skills Training Australia trainers/ facilitators are current health sector professionals – and are genuinely committed to a student-centric approach.

This drives everything we do. Within small class-size settings, we understand the importance of a relevant learning delivery that fully prepares the graduate enrolled nurse for the ‘reality-check’ within the health sector workplace.

# Study Units

The Certificate III in Health Services Assistance (HLT33115) comprises the following units:

BSBMED301	Interpret and apply medical terminology appropriately
HLTAAP001	Recognise health body systems
HLTINF001	Comply with infection control policies and procedures
HLTWHS001	Participate in work health & safety
CHCCOM005	Communicate and work in health or community services
CHCDIV001	Work with diverse people
BSBWOR301	Organise personal work priorities and development
CHCCCS002	Assist with movement
CHCCCS020	Respond effectively to behaviours of concern
CHCCCS026	Transport individuals
CHCCCS010	Maintain a high standard of service
HLTAIN001	Assist with nursing in an acute care environment
HLTAIN002	Provide non-client contact support in an acute care environment
HLTAID003	Provide first aid
CHCCCS012	Prepare and maintain beds



**DID YOU KNOW?**

One in every three (3) new jobs created over the past five years is in health.

# Professional Experience Placement

As an integral part of your new course, students will also undertake 120 hours (mandatory) professional experience placements – actively supported by some of the best public/private hospitals and healthcare settings.

The 120 hours of placement is undertaken in a single block of 3 weeks Monday to Friday, with some weekend shifts. Standard placement hours are 7am-3pm, with some afternoon shifts given.

Students will have the opportunity to attend placement in the metro and regional areas throughout Victoria.

All Placements are arranged for you by a dedicated Skills Training Australia industry sector manager, who works closely with our facility partners to ensure that the best, hands-on experience can be achieved for you.

## Police Check and Working with Children Check

In most cases, it will be a requirement of your placement provider that you undertake a Police Check and a Working with Children Check. Both checks generally need to be clear to allow you to go on placement. Where a student has been identified as having a disclosable outcome, it is up to the student to contact the Training Department should they wish to disclose the outcome and discuss.

Obtaining these checks, and any cost associated with applying for them, is your responsibility. They need to be current and must be obtained prior to your first day of placement - they will need to be sighted by your placement supervisor and/or the manager to whom you are reporting.



# Entry Requirements

There are no formal educational qualifications or prerequisites to gain entry into the Certificate III in Health Services Assistance (HLT33115).

Skills Training Australia will conduct a review of your current competencies (including literacy and numeracy skills), ensuring that you are academically-equipped to achieve your intended learning outcomes, within the given course timeframe.

A Language, Literacy and Numeracy (LLN) test must be undertaken if you have not completed year 12 in the last 2 years.

International Students are required to have an IELTS score of 6.0 in all bands (or equivalent).

International students must be 18 years of age or older.

## Information Sessions

Information sessions are compulsory for domestic enrolment into one of our courses. Please book into a suitable information session at one of our campuses.

# Tuition Fees

Skills Training Australia's Certificate III in Health Services Assistance (HLT33115) is offered to both domestic and international students.

## Full Fee

\$2,000 - this cost is the full tuition fee for the course (domestic)

\$7,500.00 - this cost is the full tuition fee for the course (international)

## Skills First Funded Fee\*

\$1,200 - this cost is the funded tuition fee for the course (domestic)

## Skills First Concession \*

\$240.00 - this is the funded concession tuition fee for the course. (domestic).

*\*Skills Training Australia may use both State and Federal funding, eligibility criteria does apply*

## Additional Fees for International Students

Administration Fee (Non-refundable) is \$300

Confirmation of enrolment (Non-refundable) is \$20

Resources-Textbooks cost approximately \$200

*"The student tuition fees as published are subject to change given individual circumstances at enrolment"*



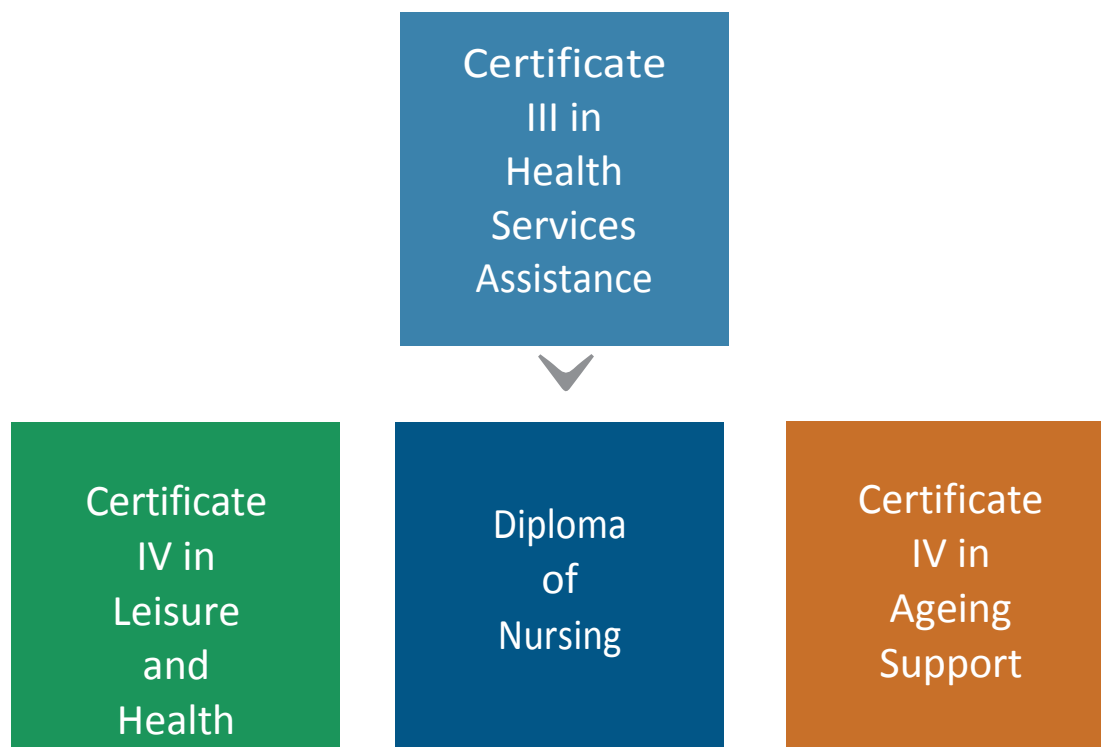
## DID YOU KNOW?

Healthcare and Social Assistance jobs growth is expected to increase 16.1% in the five (5) years to 2022.

# Study Pathways

The Certificate III in Health Services Assistance is an excellent pathway for those who wish to progress towards either the Diploma of Nursing, or Bachelor of Nursing – offered by many Australian universities and Higher Education providers.

You will be able to apply for credit transfer for any units with the same code and subject name in your application for the Diploma of Nursing, Certificate IV in Ageing support, or Leisure and Health.



# Career Outcomes

Upon successful completion of our Health Services Assistance program, our graduates are qualified to work throughout Australia within Private and Public Health sector settings.

Possible job roles for graduates include:

<b>Personal Care Assistant</b>	<b>Assistant in Nursing</b>	<b>Personal Care Assistant</b>
<b>Patient Services Attendant</b>	<b>Orderly</b>	<b>Ward Assistant</b>



ENGAGE | GROW | BECOME

For more information:

**Call 1300 656 669**